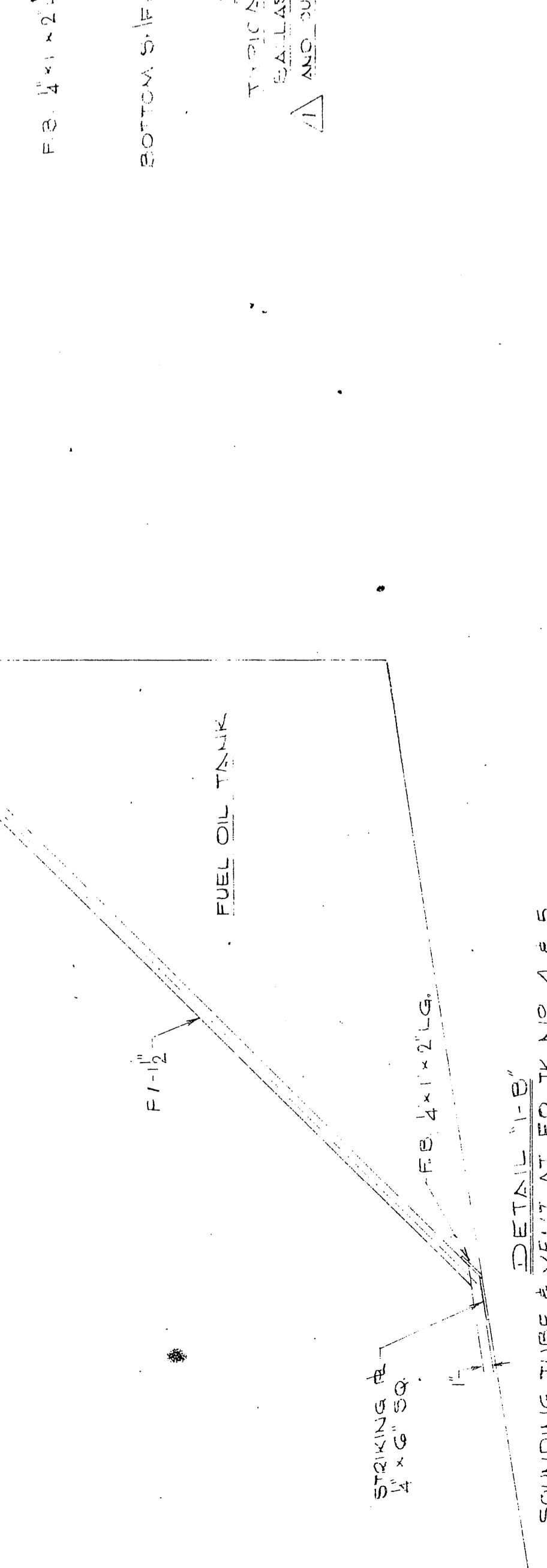
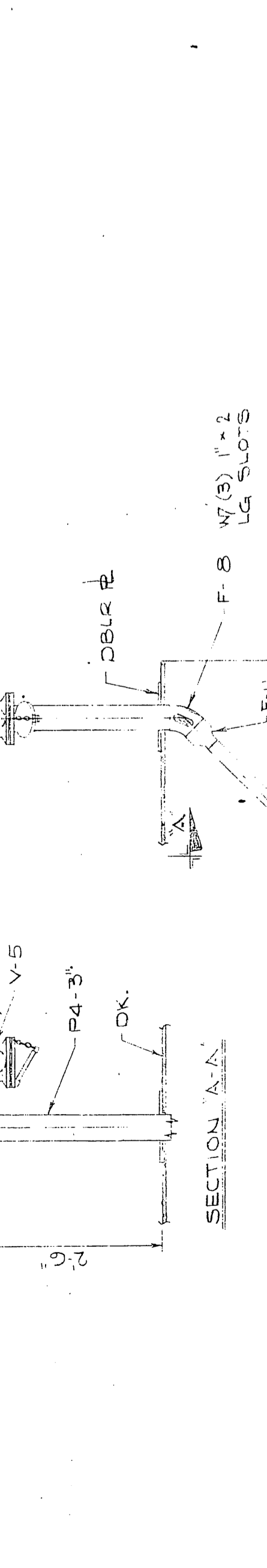
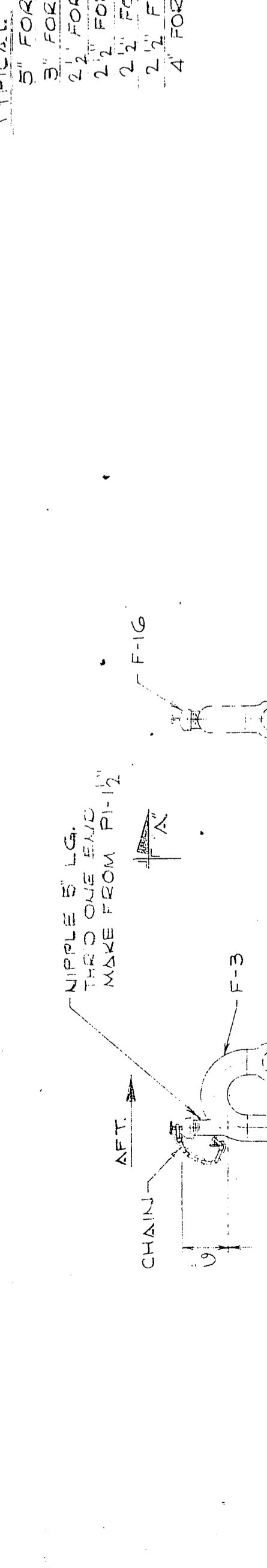
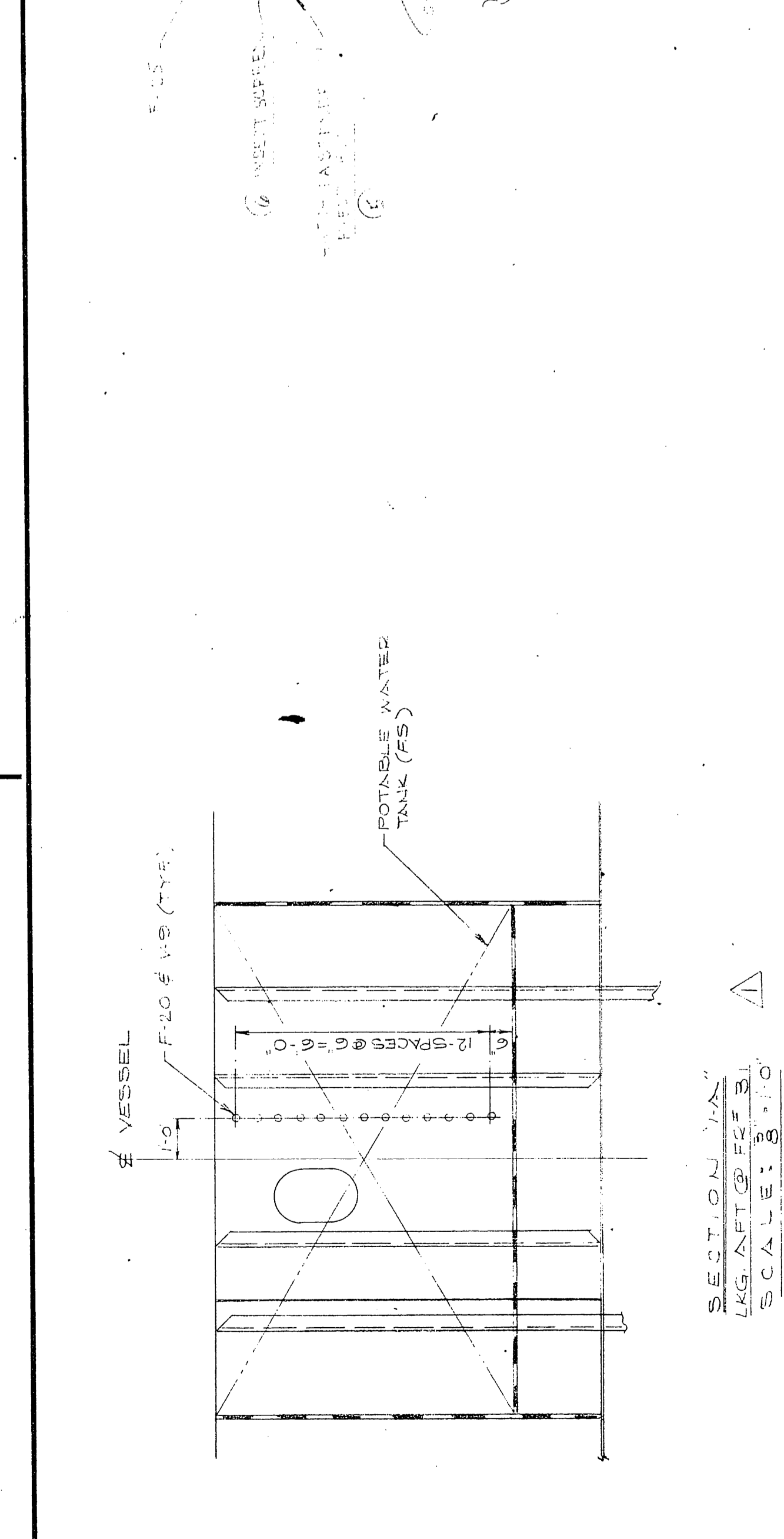
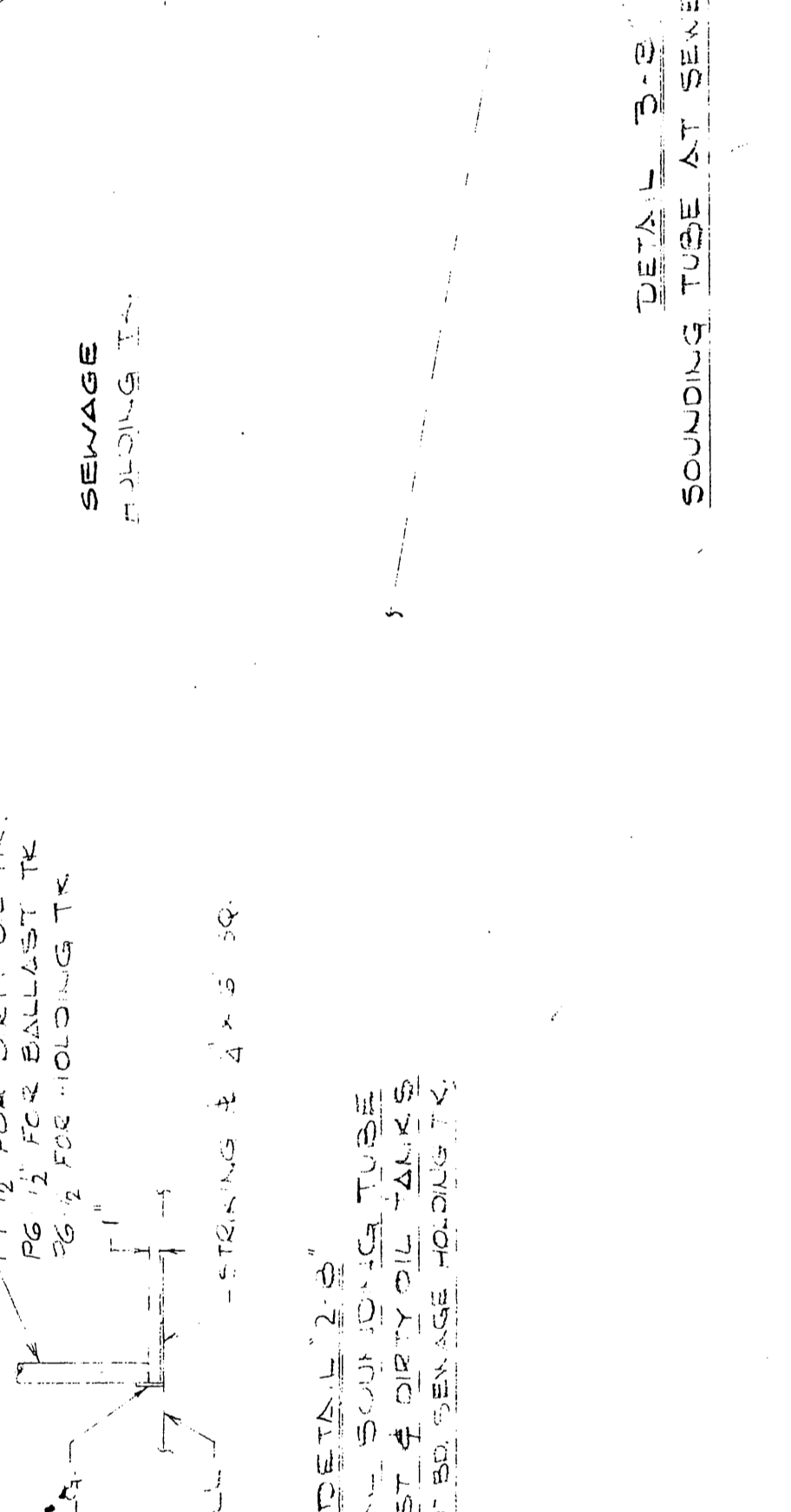
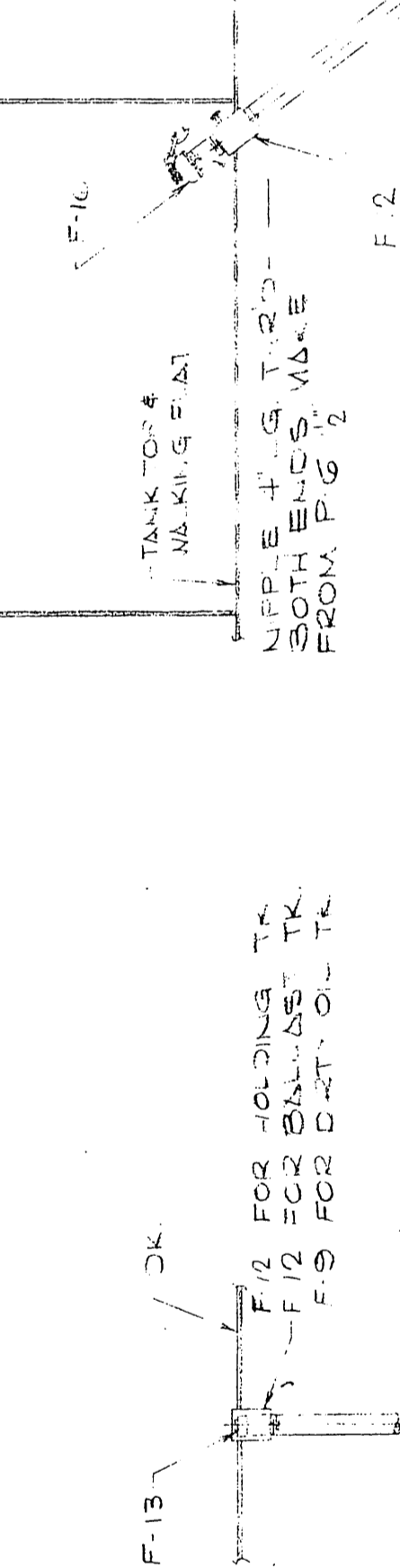
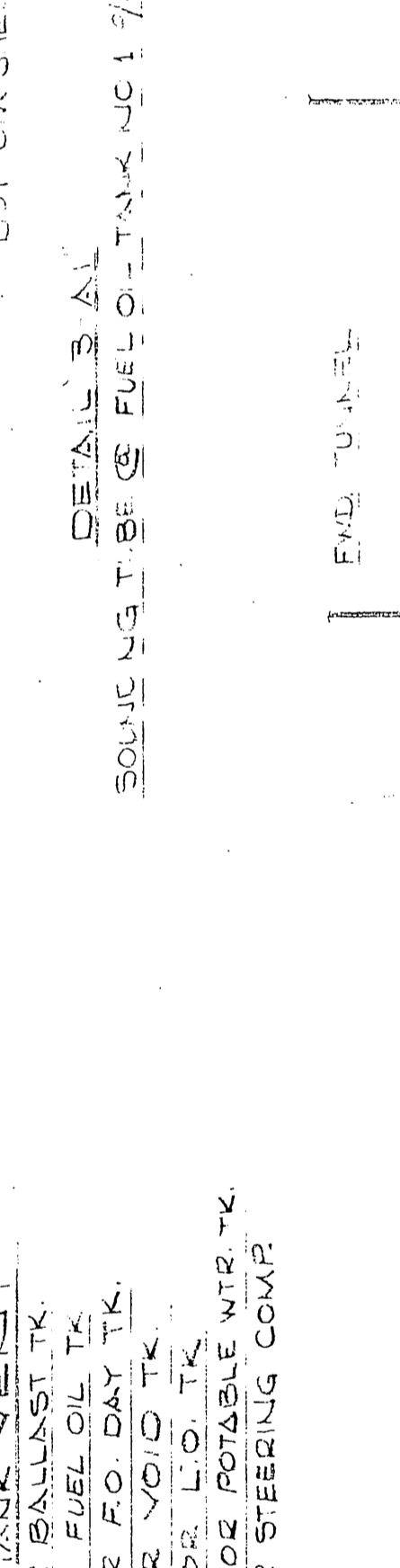
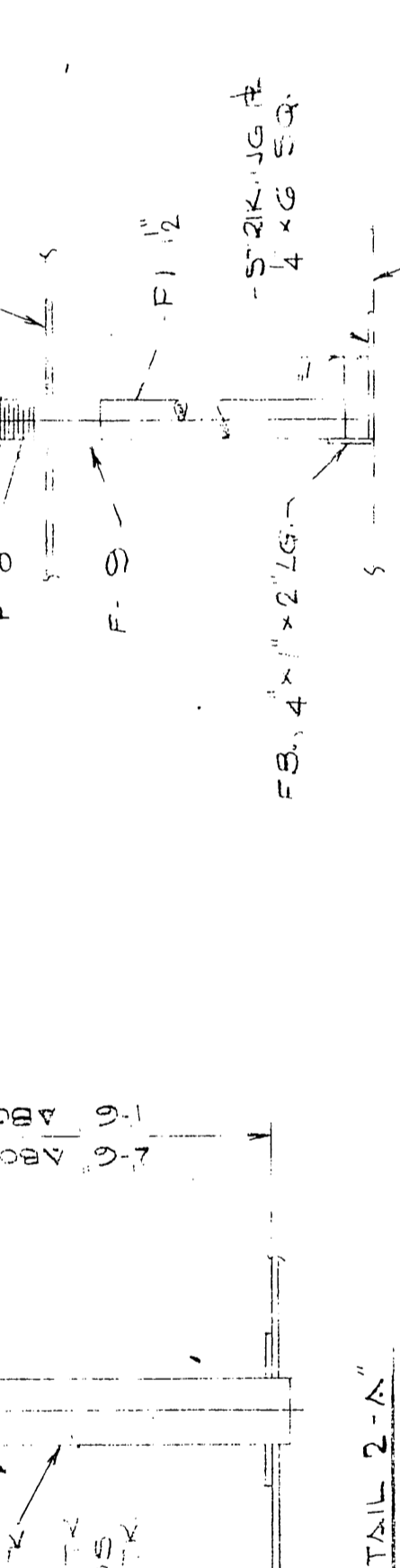
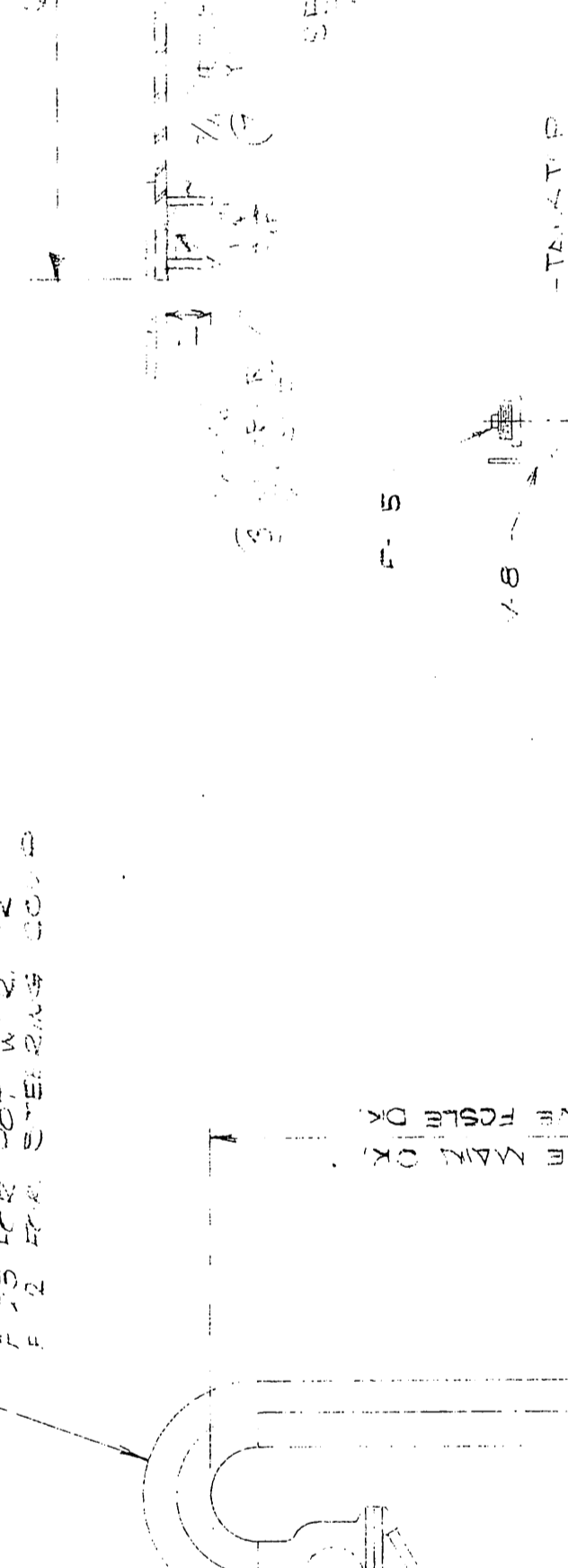
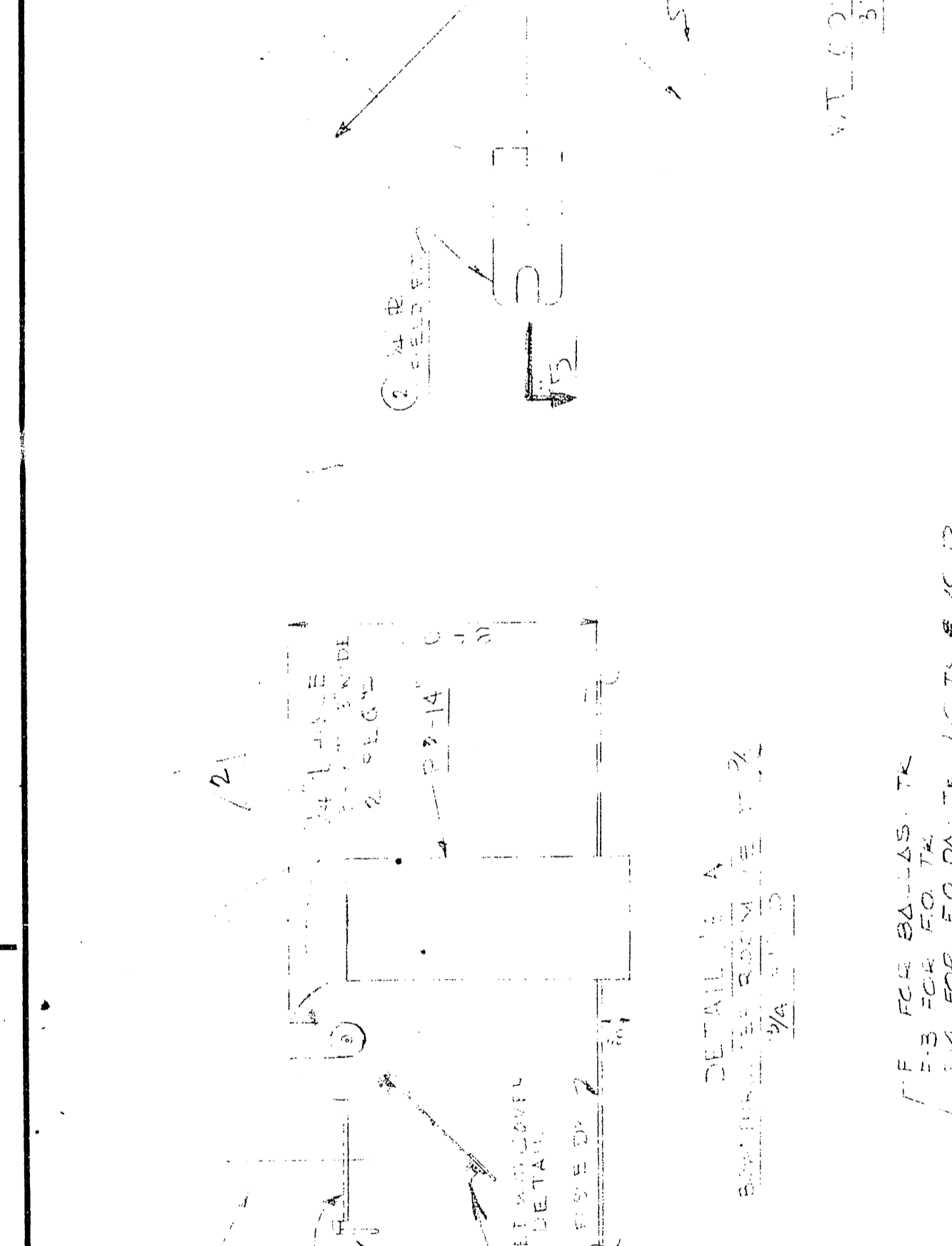
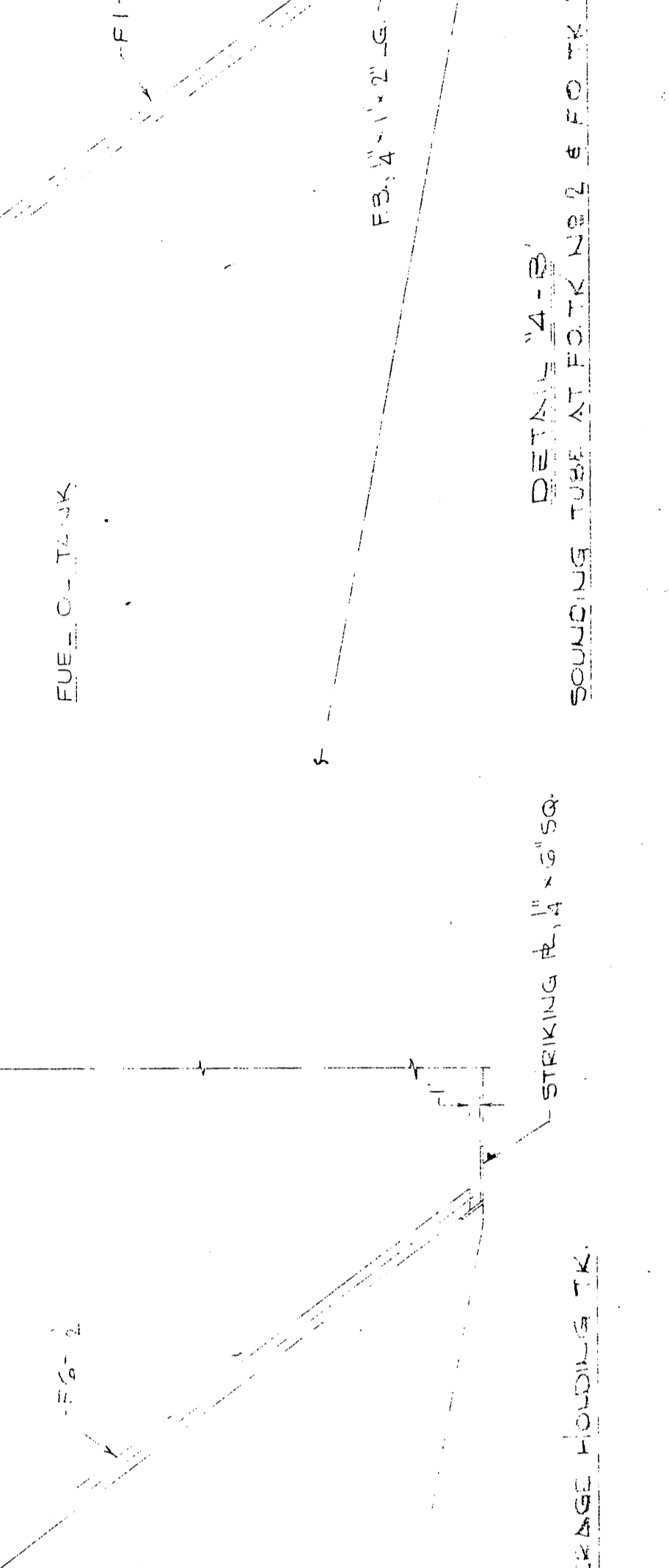
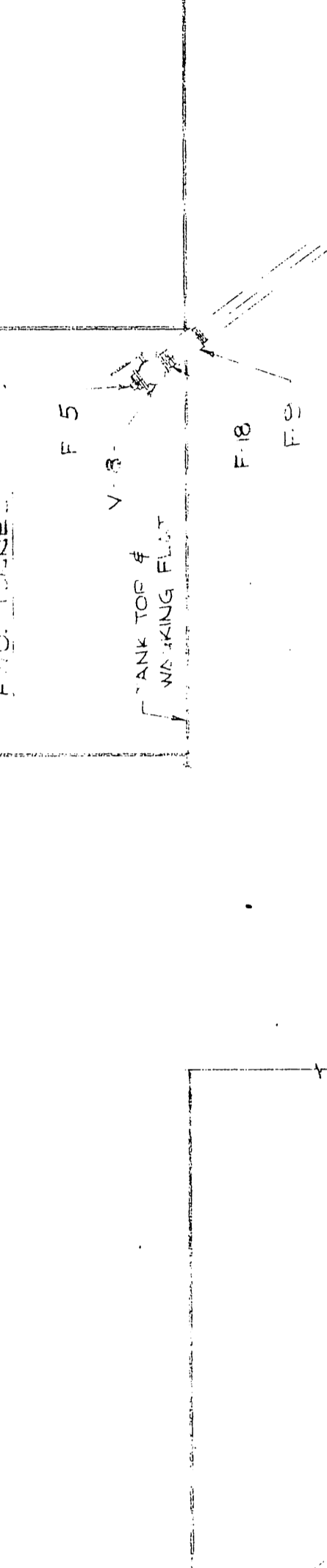
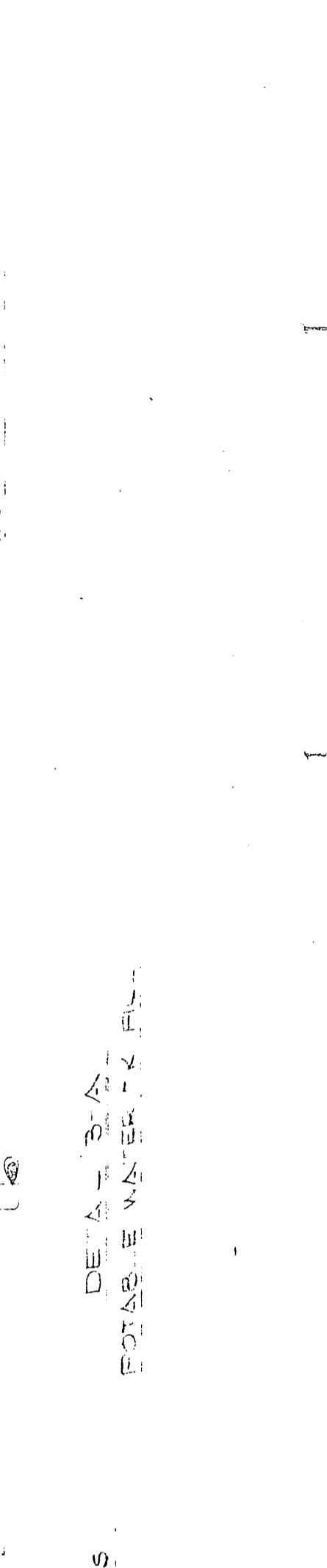
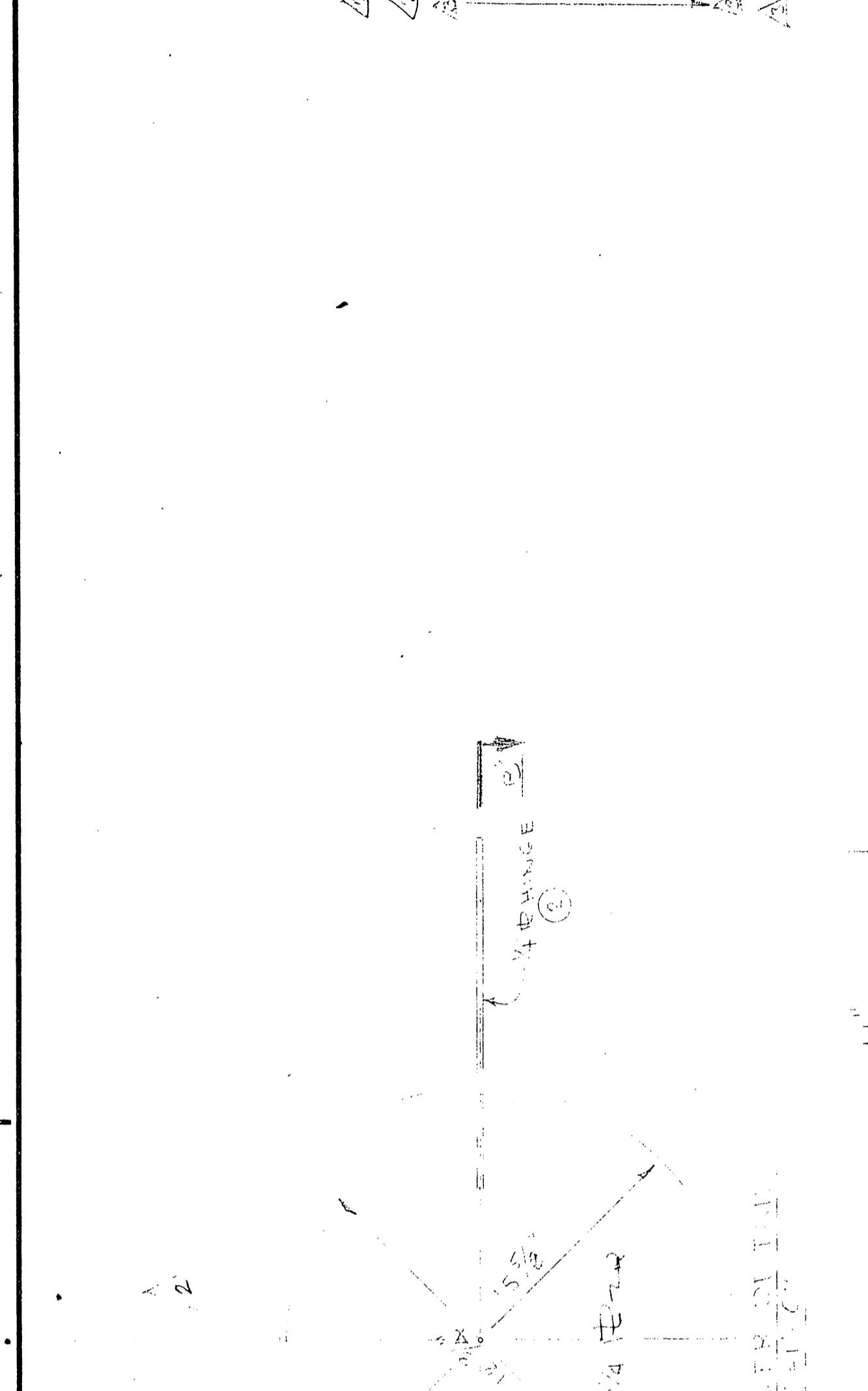
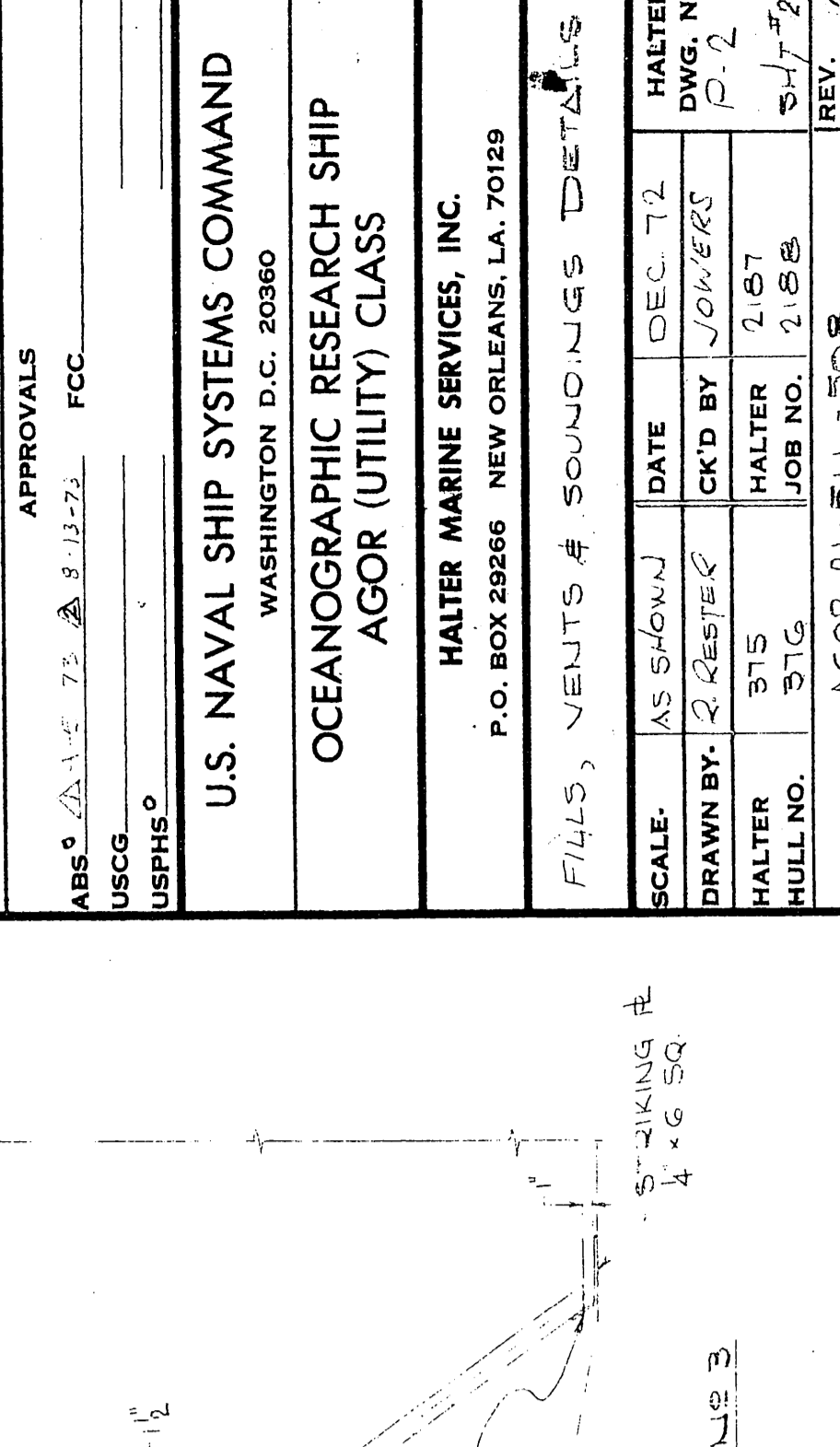
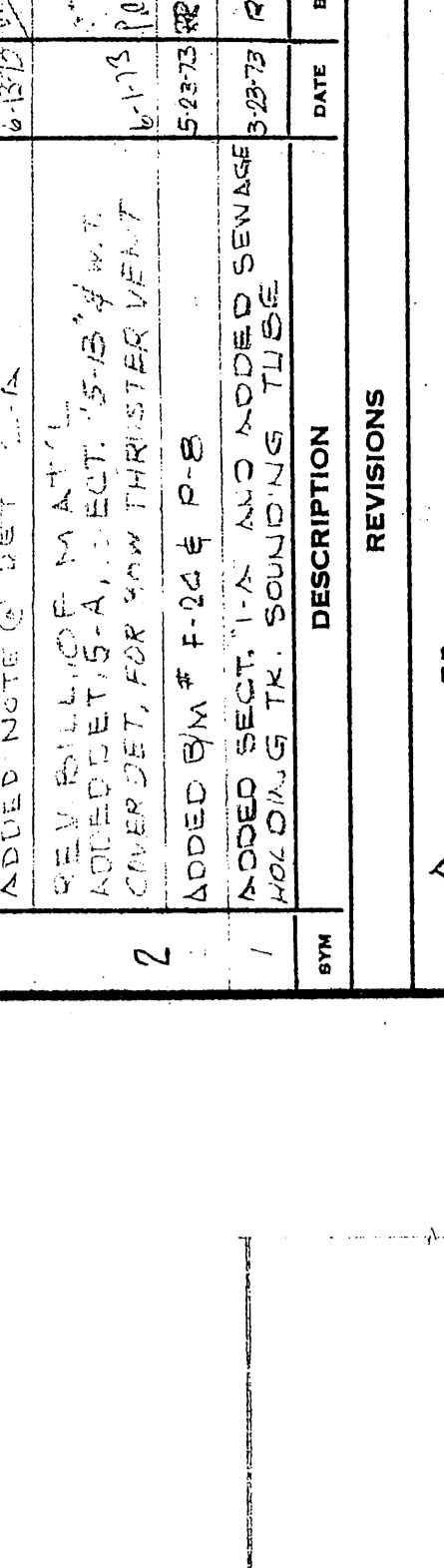
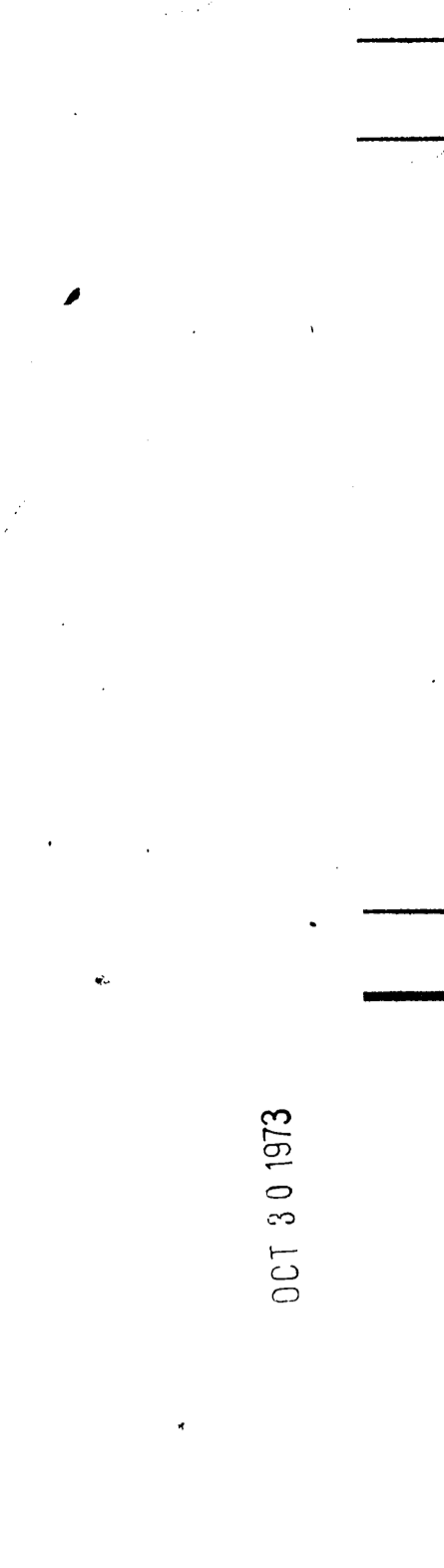
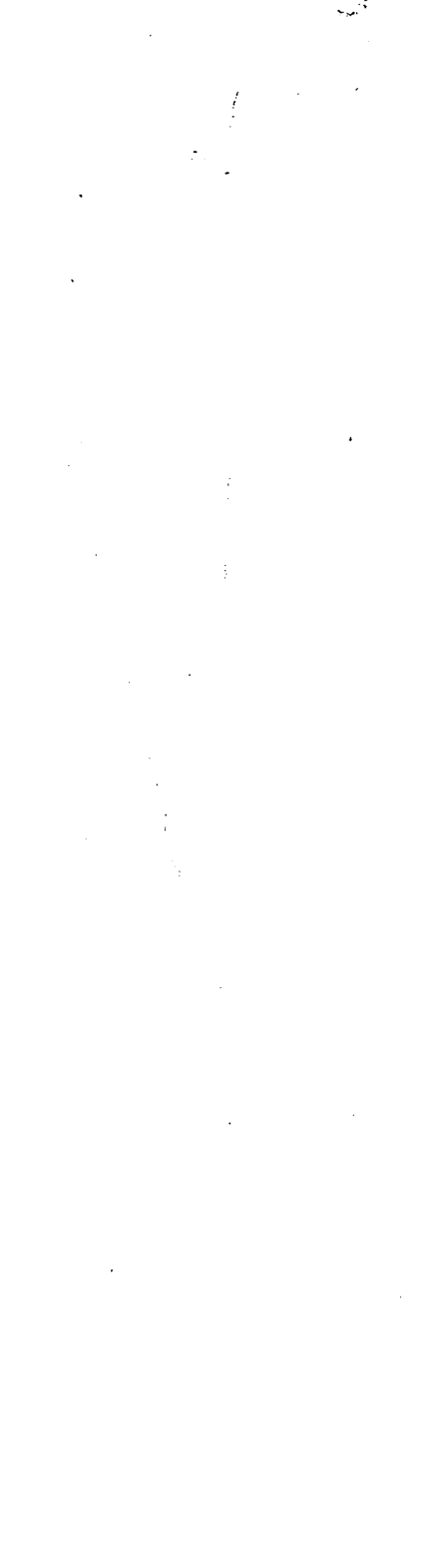


ITEM	QTY	SIZE	DESCRIPTION	UNIT	REQ'D	REMARKS
F21	2	4"	PIPE CAP FOR SOD	EA	340	
F22	2	2"	M.L. GALV. ASTM A.47	EA		
F23	2	2"	PIPE, SCH. 40 SMLS BLK	EA		
F24	2	2"	PIPE, N-55 GR. B	EA		
F25	2	2"	PIPE, SCH. 40 SMLS	EA		
F26	2	2"	PIPE, SCH. 40 SMLS	EA		
F27	2	2"	PIPE, SCH. 40 SMLS	EA		
F28	2	2"	PIPE, SCH. 40 SMLS	EA		
F29	2	2"	PIPE, SCH. 40 SMLS	EA		
F30	2	2"	PIPE, SCH. 40 SMLS	EA		
F31	2	2"	PIPE, SCH. 40 SMLS	EA		
F32	2	2"	PIPE, SCH. 40 SMLS	EA		
F33	2	2"	PIPE, SCH. 40 SMLS	EA		
F34	2	2"	PIPE, SCH. 40 SMLS	EA		
F35	2	2"	PIPE, SCH. 40 SMLS	EA		
F36	2	2"	PIPE, SCH. 40 SMLS	EA		
F37	2	2"	PIPE, SCH. 40 SMLS	EA		
F38	2	2"	PIPE, SCH. 40 SMLS	EA		
F39	2	2"	PIPE, SCH. 40 SMLS	EA		
F40	2	2"	PIPE, SCH. 40 SMLS	EA		
F41	2	2"	PIPE, SCH. 40 SMLS	EA		
F42	2	2"	PIPE, SCH. 40 SMLS	EA		
F43	2	2"	PIPE, SCH. 40 SMLS	EA		
F44	2	2"	PIPE, SCH. 40 SMLS	EA		
F45	2	2"	PIPE, SCH. 40 SMLS	EA		
F46	2	2"	PIPE, SCH. 40 SMLS	EA		
F47	2	2"	PIPE, SCH. 40 SMLS	EA		
F48	2	2"	PIPE, SCH. 40 SMLS	EA		
F49	2	2"	PIPE, SCH. 40 SMLS	EA		
F50	2	2"	PIPE, SCH. 40 SMLS	EA		
F51	2	2"	PIPE, SCH. 40 SMLS	EA		
F52	2	2"	PIPE, SCH. 40 SMLS	EA		
F53	2	2"	PIPE, SCH. 40 SMLS	EA		
F54	2	2"	PIPE, SCH. 40 SMLS	EA		
F55	2	2"	PIPE, SCH. 40 SMLS	EA		
F56	2	2"	PIPE, SCH. 40 SMLS	EA		
F57	2	2"	PIPE, SCH. 40 SMLS	EA		
F58	2	2"	PIPE, SCH. 40 SMLS	EA		
F59	2	2"	PIPE, SCH. 40 SMLS	EA		
F60	2	2"	PIPE, SCH. 40 SMLS	EA		
F61	2	2"	PIPE, SCH. 40 SMLS	EA		
F62	2	2"	PIPE, SCH. 40 SMLS	EA		
F63	2	2"	PIPE, SCH. 40 SMLS	EA		
F64	2	2"	PIPE, SCH. 40 SMLS	EA		
F65	2	2"	PIPE, SCH. 40 SMLS	EA		
F66	2	2"	PIPE, SCH. 40 SMLS	EA		
F67	2	2"	PIPE, SCH. 40 SMLS	EA		
F68	2	2"	PIPE, SCH. 40 SMLS	EA		
F69	2	2"	PIPE, SCH. 40 SMLS	EA		
F70	2	2"	PIPE, SCH. 40 SMLS	EA		
F71	2	2"	PIPE, SCH. 40 SMLS	EA		
F72	2	2"	PIPE, SCH. 40 SMLS	EA		
F73	2	2"	PIPE, SCH. 40 SMLS	EA		
F74	2	2"	PIPE, SCH. 40 SMLS	EA		
F75	2	2"	PIPE, SCH. 40 SMLS	EA		
F76	2	2"	PIPE, SCH. 40 SMLS	EA		
F77	2	2"	PIPE, SCH. 40 SMLS	EA		
F78	2	2"	PIPE, SCH. 40 SMLS	EA		
F79	2	2"	PIPE, SCH. 40 SMLS	EA		
F80	2	2"	PIPE, SCH. 40 SMLS	EA		



SECTION 1111  
LEG. ACFT (P) 8  
SCALE: 3/4\"/>

SECTION 1112  
LEG. ACFT (P) 8  
SCALE: 3/4\"/>

SECTION 1113  
LEG. ACFT (P) 8  
SCALE: 3/4\"/>

SECTION 1114  
LEG. ACFT (P) 8  
SCALE: 3/4\"/>

SECTION 1115  
LEG. ACFT (P) 8  
SCALE: 3/4\"/>

SECTION 1116  
LEG. ACFT (P) 8  
SCALE: 3/4\"/>

NO.	DATE	DESCRIPTION	BY
1	15 MAR 73	ISSUED FOR CONSTRUCTION	J.C.
2	28 FEB 74	REVISION: CHANGED MATERIALS TO PER MIL-SPEC	J.C.
3	11 MAR 74	REVISION: ADDED SECT. 1, 2, AND 3 TO LIST	J.C.
4	11 MAR 74	REVISION: ADDED SECT. 4 TO LIST	J.C.
5	11 MAR 74	REVISION: ADDED SECT. 5 TO LIST	J.C.